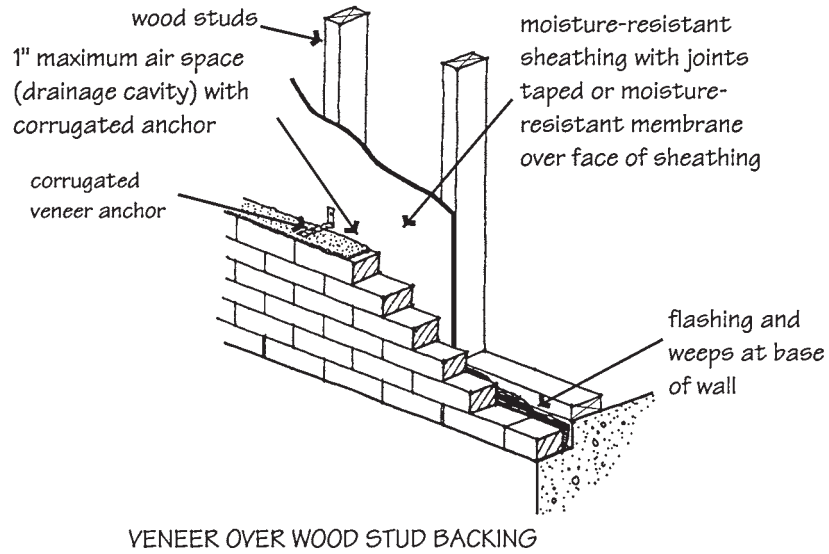


Figure 8-7 Multi-wythe cavity walls.

horizontally between supports. Codes generally permit the waiver of intermediate support requirements when such special design techniques are approved by the building official. When applied in this manner, masonry veneers may be constructed to 100 ft or more in height without shelf angles. More typically, however, masonry veneers are designed empirically as panel walls supported at each floor level. Masonry veneers are discussed in detail in Chapter 10.



minimum 2" air space is recommended to minimize mortar bridges and increase drainage, but requires wire anchors instead of corrugated sheet metal anchors

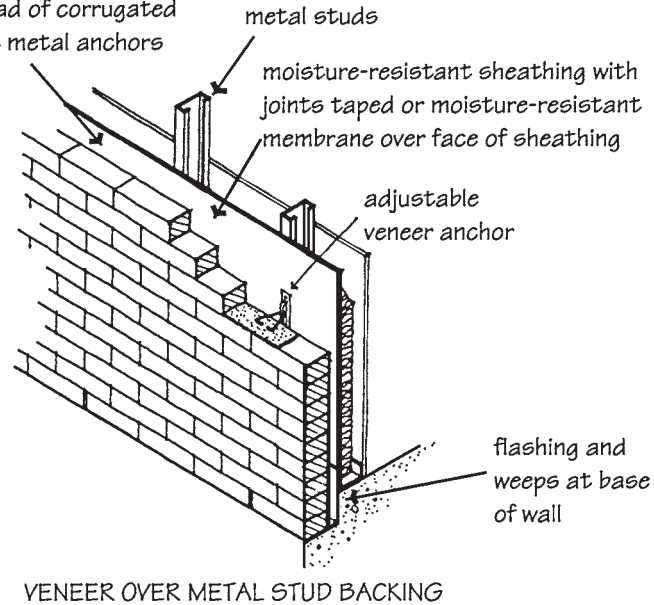


Figure 8-8 Masonry veneer walls.

**8.4 FIRE RESISTANCE CHARACTERISTICS**

Building fires are a serious hazard to life and property, and fire safety in construction is therefore a primary consideration of every building code authority. According to the National Fire Protection Association (NFPA), construction deficiencies are a major factor in large-loss fire experiences. NFPA records show that combustible construction is the predominant cause of conflagrations, particularly in areas of closely built wood frame structures,